

10594

PUBLIC WATER SYSTEMS

- Class I Service Area Boundaries
- ▨ Class II Water Systems
- ▲ Class III Water Systems
- Class IV Water Systems
- - - South King County Critical Water Supply Service Area

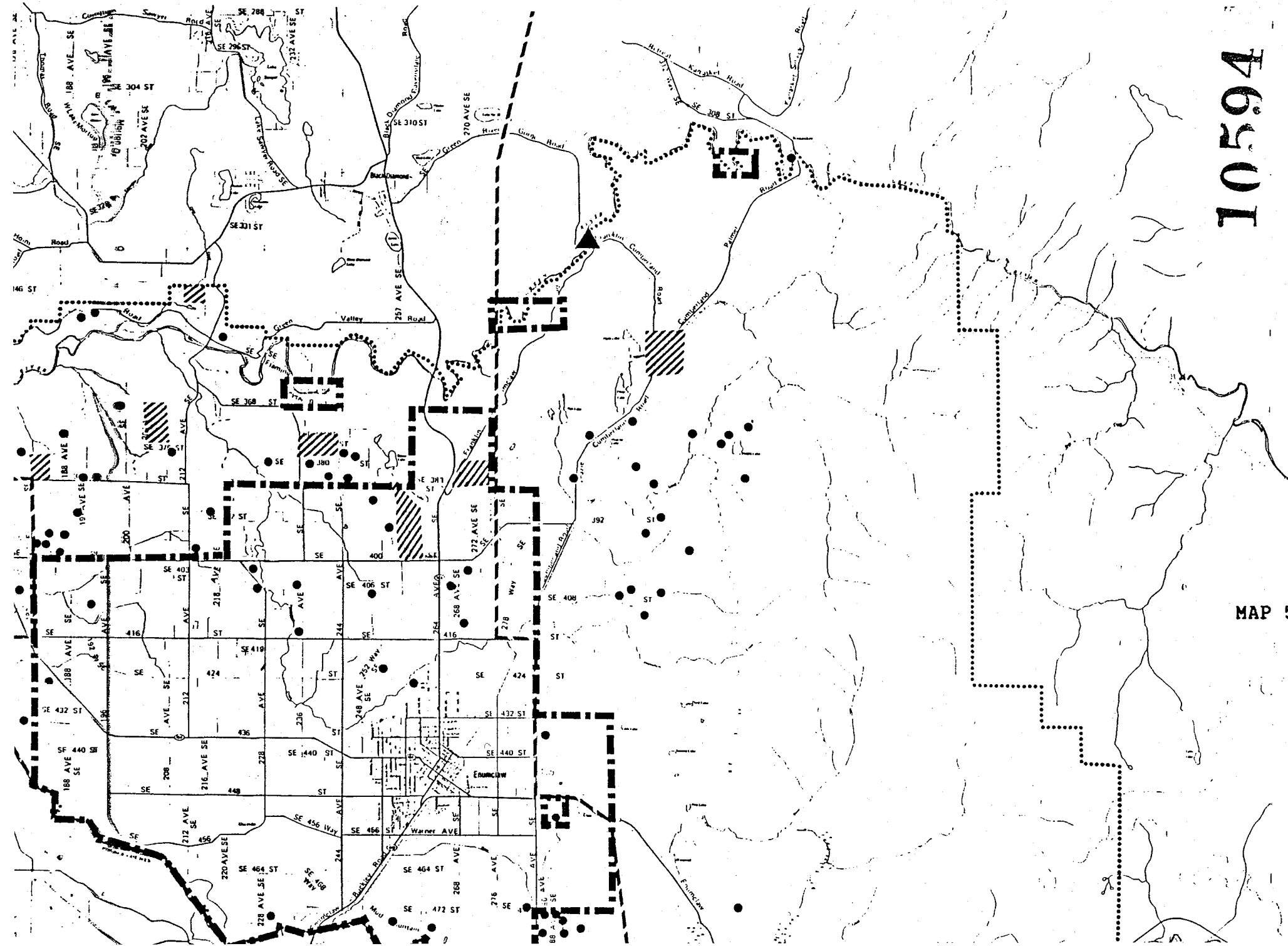
Source: Washington State Department of Social and Health Services; Seattle-King County Health Department

MAP 5. Community planning area.



Enumclaw

Community Plan



August 28, 1992
kwm127

INTRODUCED BY PAUL BARDEN

PROPOSED NO. 92-690

ORDINANCE NO. **10595** | |

AN ORDINANCE approving the Cedar River Sewer System Comprehensive Plan.

PREAMBLE:

K.C.C. 13.24 requires approval of comprehensive plans for sewer districts as a prerequisite to the granting of right-of-way franchises and approval of right-of-way construction permits.

The Cedar River Sewer System Comprehensive Plan was approved by vote of the board of commissioners of the Cedar River Water and Sewer District on November 5, 1991.

On June 24, 1992 the King County Utilities Technical Review Committee met to consider the plan and finding it consistent with K.C.C. 13.24 recommended approval.

The Cedar River Water and Sewer District issued a determination of nonsignificance in accordance with the State Environmental Policy Act on October 15, 1991.

BE IT ORDAINED BY THE COUNCIL OF KING COUNTY:

SECTION 1. The Cedar River Sewer System Comprehensive Plan, attached as Exhibit A, is hereby approved with no conditions.

INTRODUCED AND READ for the first time this 5th day of October, 1992

PASSED this 12th day of October, 1992

KING COUNTY COUNCIL
KING COUNTY, WASHINGTON

Rudney Senger
Chair

ATTEST:

Ronald A. Peterson
Clerk of the Council

APPROVED this 23rd day of October, 1992

Phyllis Hall
King County Executive

1
2
3
4
5
6
7
8
9
10
11
12
13
14
15
16
17
18
19
20
21
22
23
24
25
26
27
28
29
30
31
32

ORDINANCE 10595

**CEDAR RIVER WATER AND SEWER DISTRICT
1991 SEWER SYSTEM COMPREHENSIVE PLAN
NOVEMBER 1991**

HUGH G. GOLDSMITH & ASSOCIATES, INC.

ATTACHMENT(S) AVAILABLE IN ARCHIVES